

J.L. WINGERT CO.

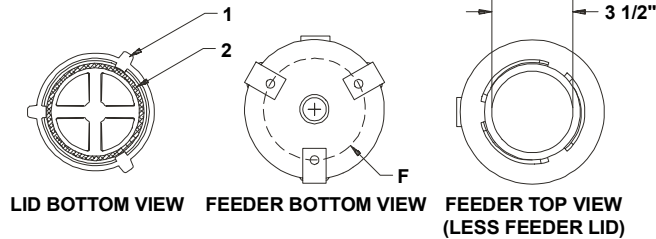
P.O. Box 6207 • Garden Grove, CA 92846-6207 / 11800 Monarch Street • Garden Grove, CA 92841-2113
 Phone (714) 379-5519 • Fax (714) 379-5549 ■ Southwest Regional Sales Office Phone (602) 470-1015
 30998 Huntwood Avenue, Unit 105 • Hayward, CA 94544-7033 • Phone (510) 487-5310 • Fax (510) 487-5137

On the Internet: www.jlwingert.com • Email: customerservice@jlwingert.com

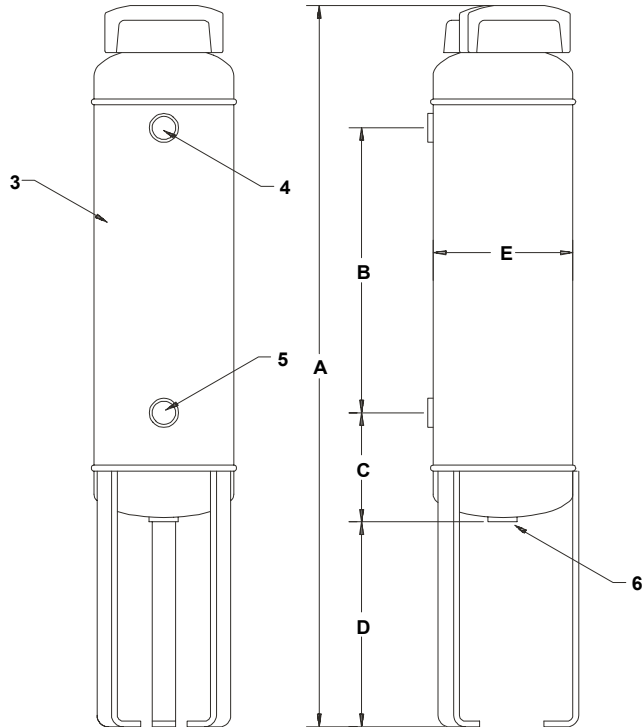
MANUFACTURING: Mixers, Bypass Feeders, Filter Feeders, Sample Coolers, Sludge Traps, Separators, Tank Stands,
 Tank Package Systems, Glycol Feed Systems, Coupon Racks, Custom Packaged Systems and Specialty Welding

Specification Sheet #032002 Rev. "F" (12/99)

DOME BOTTOM BYPASS FEEDERS



LID BOTTOM VIEW FEEDER BOTTOM VIEW FEEDER TOP VIEW (LESS FEEDER LID)



PARTS, MATERIALS AND SPECIFICATIONS:

KEY	PART	SPECIFICATIONS
1	3071	CLOSURE: 3 1/2" cast iron, 1/4 turn closure. (O-ring included)
2	3072	O-RING: Buna-N O-ring 200° F
3		BODY: Carbon steel
4		OUTLET: 3/4" FNPT
5		INLET: 3/4" FNPT
6		DRAIN: 3/4" FNPT
MAX. PRESSURE		200 PSI (13.6 BAR)
MAX. TEMPERATURE		200° F (93° C)

VOLUME (FILL CAPACITY)

MODEL	GALLONS	LITERS
DB-2HD	2.39	9.04
DB-5HD	6.30	23.85
DB-12HD	13.28	50.27
DB-18HD	19.74	74.72

DIMENSIONS, WEIGHT & CUBE:

KEY	DB-2HD	DB-5HD	DB-12HD	DB-18HD
A	31 3/8"	31 5/8"	52 1/8"	70 7/8"
B	12 1/2"	10 3/4"	31"	44"
C	4 3/4"	6 1/2"	6 1/2"	10 7/8"
D	8 3/4"	7 3/4"	7 3/4"	7 3/4"
E	6"	10"	10"	10"
F	4"	8"	8"	8"
WEIGHT	23 lbs. (10.4 kgs.)	37 lbs. (16.8 kgs.)	62 lbs. (28.1 kgs.)	86 lbs. (39 kgs.)
CUBE	6" X 6" X 32"	10" X 10" X 32"	10" X 10" X 53"	10" X 10" X 72"

Note: All dimensions are +/- 1/8". All weights are approximate. All dimensions are subject to change without notice.